

livio^{AI}

Reimagining what a
hearing aid can do



TIME
BEST

INVENTIONS

2019

Award-winning technology

The hearing aid that launched a revolution is one of TIME Magazine's 100 Best Inventions of 2019. Livio AI, the world's first Healthable hearing aid with artificial intelligence and embedded sensors, addresses the deep connection between hearing health and overall health.

Continuous innovation

We've reinvented the hearing aid with integrated sensors and artificial intelligence to empower you with life-changing features and sound performance. It's just the beginning of our continuous effort to deliver the best hearing health solutions with the most advanced technologies.



livio^{AI}



The hearing aid reinvented

Livio AI is not only our best sounding hearing aid ever, it's the world's first hearing aid that monitors brain and body activity, and provides convenient features that can simplify your life.

Built-in Artificial Intelligence

Livio AI gives you life-changing features with powerful artificial intelligence in every device.

Personalised Power

The world's first custom-molded rechargeable hearing aids giving you discreet, comfortable and convenient options.



livio^{AI}

Thanks to advanced technology we call Hearing Reality, Livio AI is designed to be effective in the noisiest environments. In fact, a recent independent study gave Livio AI hearing aids the top rating compared to other manufacturers' premium devices for reducing background noise in noisy listening environments.¹

Hear speech comfortably even in busy settings while unwanted noise is suppressed.

No buzzing, no whistling, just comfortable, feedback-free listening all day.

Get superior sound quality, clarity, more natural hearing and effortless transitions.

Stream crisp, clear phone calls and experience music the way it was meant to be heard.

Connect hearing aids via Bluetooth® with accessories and select smartphones.*



Preserve peace and quiet while important sounds like speech are amplified.

*Remote Microphone + is required for certain smartphones.

Healthy hearing means a healthier you

A growing body of evidence points to a connection between hearing health and overall health. People who treat their hearing loss not only hear better, they lower their risk for serious health issues such as cognitive decline and dementia.²



Better tracking accuracy

The ear is the best place to track health and fitness data. Livio AI provides you with that advantage.



Body Tracking

Staying active is key to staying healthy. Tracking steps and movement has been shown to inspire continuing or increasing activity.



Brain Tracking

A healthy social life can reduce stress and prevent depression, leading to better brain health. Monitoring hearing aid use and engagement can encourage more social interaction.

Custom.
Convenient.
Comfortable.

Meet the world's first 2.4 GHz custom rechargeable hearing aids. Custom means the hearing aid is custom molded to fit your unique ear canal comfortably and securely. Multiple colour options allow you to be discreet or show off your new in-ear device.



Our new charger fits all custom hearing aids and provides up to 24 hours of power in a single charge.

thrive



Easy personalised control

The Thrive Hearing Control app works seamlessly with Livio AI to give you complete control of your hearing aids. Change settings easily, quickly adjust volume, create customised memories and stream music or phone calls with the touch of a button.

And that's just the beginning

The Thrive Hearing Control app delivers many powerful features that are easy to use and will help you manage your health and access useful information.



Simplify + thrive

No other hearing aid puts powerful, easy-to-use information features at your fingertips like Livio AI.



Hearing Care Anywhere

Request and receive adjustments from your hearing professional, anytime, anywhere.



Reminders

Get on-screen notifications for tasks like taking medications.



Auto On/Off

Livio AI detects when you put your hearing aids in and take them out saving battery life.



Transcribe

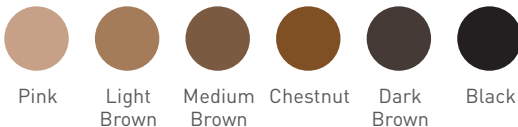
Conversations are captured as text on your smartphone and can be saved or shared.



AI-powered hearing solutions for every need

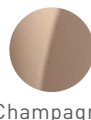
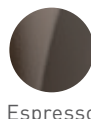
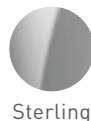
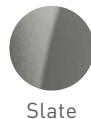
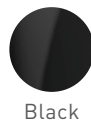
Talk to your hearing professional about your budget, your lifestyle and how active you are to help find the hearing aid that's right for you. And if you have single-sided hearing loss, we have solutions to help you.

In-ear Solutions



For optimal sound quality and universal connectivity without health-tracking sensors, try Livio hearing aids.

Over-the-ear Solutions



Reconnect with what matters most

Sleek, wireless accessories stream the sounds you love directly to your Livio AI hearing aids. Enjoy your favourite music, TV shows and phone calls with excellent sound quality.

1. Mini Remote Microphone

Enjoy one-on-one conversations in noisy environments by clipping it to your conversation partner's clothing.

2. TV Streamer

Easily stream audio from your TV or other electronic audio source directly to your hearing aids.

3. Remote Microphone +

Enables easy audio streaming and one-on-one conversations in noisy environments.

4. Table Microphone

Make group settings easy with eight built-in microphones that stream the primary speaker's voice to your hearing aids.

5. Remote

Easily control memory and volume, mute your hearing aids and turn other special features on and off.



livioEdge^{AI}



Introducing

The newest member of the Livio AI family

Livio Edge AI puts the power of artificial intelligence at your fingertips, giving you never-before-possible sound performance in the most challenging listening environments.



Game-changing Sound with Edge Mode

Livio Edge AI takes our industry-leading sound performance to new heights, providing you with instantaneous adjustments whenever and wherever you need them.

With a simple tap, the artificial intelligence inside the hearing aids scans the environment and makes changes on the spot to help you when you need it most. This next-generation sound processing is only available through Livio Edge AI.

To learn more, ask your hearing professional about Livio Edge AI.

The Starkey logo, Livio, Livio logo, Healthable, Thrive and Thrive logo are trademarks of Starkey Laboratories, Inc.

Apple, the Apple logo, iPhone, iPad, iPod touch, App Store and Siri are trademarks of Apple, Inc., registered in the U.S. and other countries.

Google Play is a trademark of Google LLC.

The Bluetooth® word mark and logos are registered trademarks owned by Bluetooth SIG, Inc. and any use of such marks by Starkey is under license.

©2019 TIME USA LLC. All rights reserved. Used under license. TIME and TIME USA LLC. are not affiliated with, and do not endorse products or services of Starkey Hearing Technologies.

SOURCES

¹ FORCE Technology, Senselab. (2018, November). Benchmark evaluation of spatial noise management in hearing aids. FORCE Technology Venlighedsvej 4 2970 Hørsholm, Denmark.

² Bassuk, S. S., Glass, T. A., & Berkman, L. F. (1999, Aug. 3). Social disengagement and incident cognitive decline in community-dwelling elderly persons. *Annals of Internal Medicine*, 131(3), 165-173.

The app may have slight differences depending on your phone.



www.Starkey.com